

CE TYPE APPROVAL CERTIFICATE

n. **289154501/OE**

2015/11/04

This is to certify, that the hereunder described items of Personal Protective Equipment have overcome positively the "CE type examination", proving their conformity to the safety and health requirements of the Directive 89/686/EEC.

| | | |
|--|---|---|
| Manufacturer: (Responsible of the PPE) | SAS-TEC GmbH Volmarstraße 5, 71706 Markgröningen (DE) | |
| Type of PPE: | Back protector for motorcycling use – Type CB (central back) | |
| Category of PPE: | II: Personal Protective Equipment against "medium" risks. This certificate is based on reference standards listed below: its validity is no longer ensured should new version of the standards come into force. | |
| Model | "SC-1/CBXX" | |
| Description: | entirely made of PU foam partially perforated and fastening system are absent because the protectors are inserted in special pockets in the motorcyclists' protective clothing; Article CODE SC-1 is followed by (according to sizes): <u>CB42 = M – CB47 = L - CB52 = XL</u> | |
|  | | |
| Technical Standard: | EN 1621-2:2014 | Motorcyclists' protective clothing against mechanical impact - Part 2: Motorcyclists' back protectors – Requirements and test method. |
| Intended use: | preventive use during motorcycling. This back protector must always be properly connected and fixed to its garment and with all other suitable P.P.E. and sports clothing in order to ensure the most complete protection. | |
| Size range: | Commercial size | Size in accordance with EN 1621-2:2014 (waist – to – shoulder length range min.-max. in cm) |
| Type of back protector: CB= central back | | |
| | M | 38-42 |
| | L | 43-47 |
| | XL | 48-52 |
| Technical File: | DC-7547 (including Application to RCT and Technical Documents). | |
| Test report: | RCT n°344219/E. | |
| Basis of evaluation: | applicable requirements of European Directive 89/686/EEC and reference Standards. | |

CE TYPE APPROVAL CERTIFICATE

n. **289154501/OE**

2015/11/04

Functions and performance levels:

to reduce the severity of traumas caused by impacts. The protectors provide limited protection against mechanical impact in case of falls.

Typical test results obtained (see also Test Report):

method: "Kerbstone" impact testing at 50 J;

Mandatory tests: from the values of transmitted force obtained at standard ambient conditions and after hydrolytic treatment (= wet conditions) the performance reached is: **level 1.**

Optional tests: after low temperature (24h/-10°C) the performance reached is: **level 1.**

So, the overall performance reached by this limb joint protector is: **level 1.**

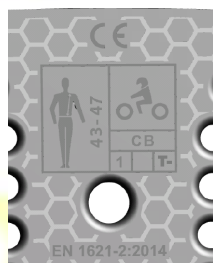
Note: The Standard provides 2 performance levels with level 2 meaning the higher performance. The protective functions depend also on the correct positioning of the protector, which falls within the responsibility of the user.

Marking:

(see example below)

printed directly onto the protector foam and displaying the following information:

- **CE Marking** indicating the conformity of the PPE to the provisions of the Directive 89/686/CEE (and later amendments);
- Name + Address of the Manufacturer;
- designation of the P.P.E. (unique and unambiguous);
- indication of the Technical Harmonized Standard;
- pictogram to indicate the motorcycling use, the type and size of protector, the level of performance and the symbol to indicate the overcoming of tests at low temperature;
- pictogram required by EN 1621-2:2014 for the indication of the W-S length;
- additional info: international care symbols (indicated on a separate label).



Note: the Technical File contains a more detailed description of the PPE (material, method of assembly, photographs or drawings), performance data, safety functions and level of protection, elements of conformity to the basic and supplementary requirements. The Technical File is integral part of the present Certification, which has to be kept available by the applicant to be forwarded - upon request - to the entitled person (supervising body, Controlling Officer).